

# SENIOR PARENT MEETING

September 5, 2023



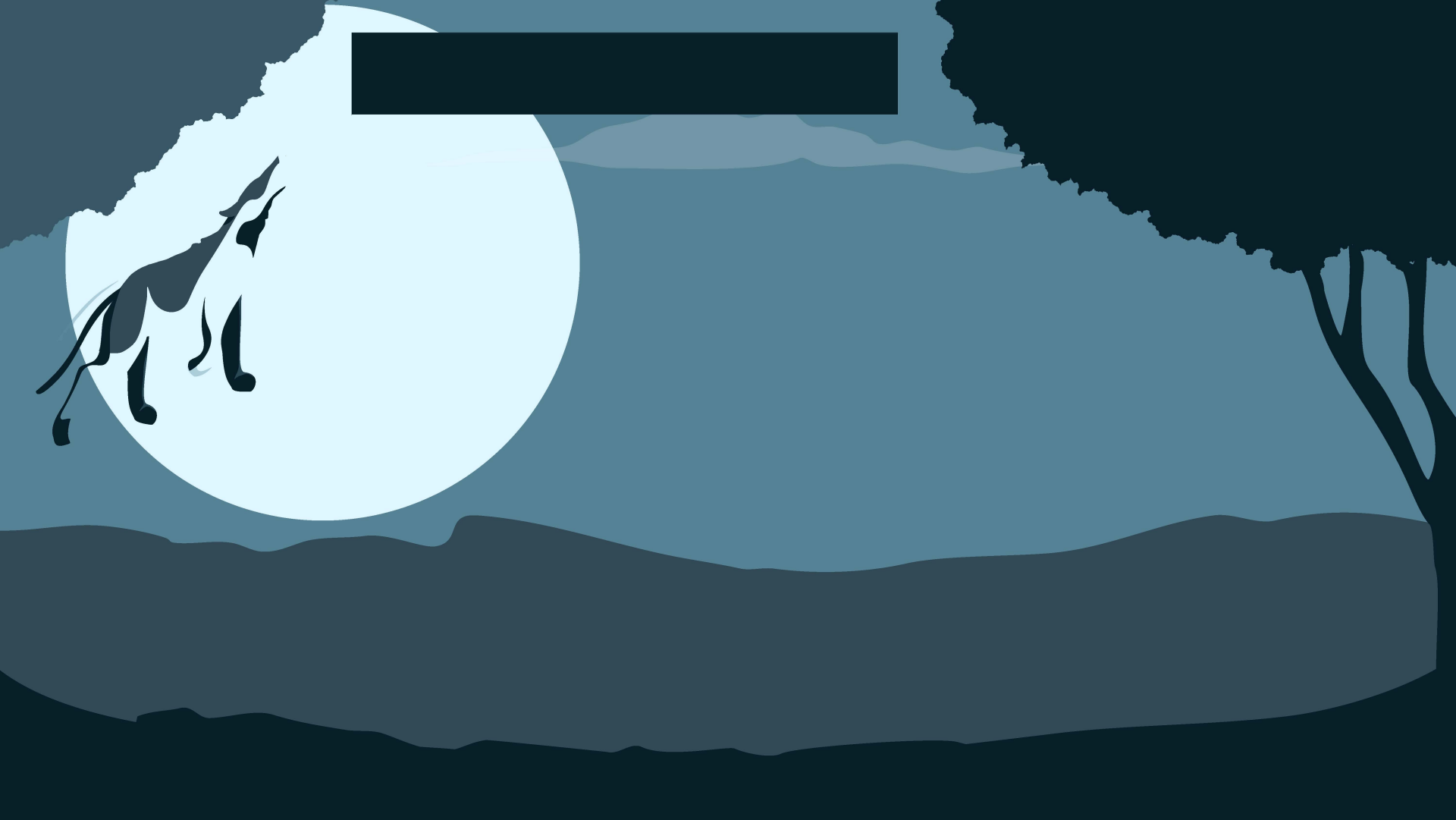








































































## Williamson County Schools Seal of Biliteracy



### SILVER AWARD

Evidence of English Proficiency	Evidence of World Language Proficiency
WCS weighted cumulative GPA in required English Language Arts courses of at least a 3.0	Score at least Intermediate-Mid on an ACTFL-recognized exam in all modes of communication, including: Interpersonal Listening & Speaking, Presentational Writing, Interpretive Reading, and Interpretive Listening or
and one (1) of the following:	Score at least a 3 on a world language Advanced Placement exam or
Score at least on-track on each English Language Arts End of Course assessment or	Score at least a 4 on a world language International Baccalaureate exam or
Score at least a 3 on the Advanced Placement English Language or English Literature Exam or	Score at least Intermediate Mid (or the equivalent) on a foreign government's approved non-English exam or a another country's secondary level exam
Score at least a 4 on the English International Baccalaureate Exam or	
Score at least a 22 on the ACT Reading subtest or	
Score at least a 4.5 (cumulative) on the WIDA Access-ESL students only	

### GOLD AWARD

Evidence of English Proficiency	Evidence of World Language Proficiency
WCS weighted cumulative GPA in required English Language Arts courses of at least a 3.5	Score at least Advanced-Low on an ACTFL-recognized exam in all modes of communication, including: Interpersonal Listening & Speaking, Presentation Writing, Interpretive Reading, and Interpretive Listening or
and one (1) of the following:	Score at least a 5 on a world language Advanced Placement exam or
Score at least mastered on each English Language Arts End of Course assessment or	Score at least a 6 on a world language International Baccalaureate exam or
Score at least a 5 on the Advanced Placement English Language or English Literature Exam or	Score at least Advanced-Low (or the equivalent) on a foreign government's approved non-English exam or a another country's secondary level exam
Score at least a 6 on the English International Baccalaureate Exam or	
Score at least a 25 on the ACT Reading subtest or	
Score at least a 4.8 (cumulative) on the WIDA Access-ESL students only	

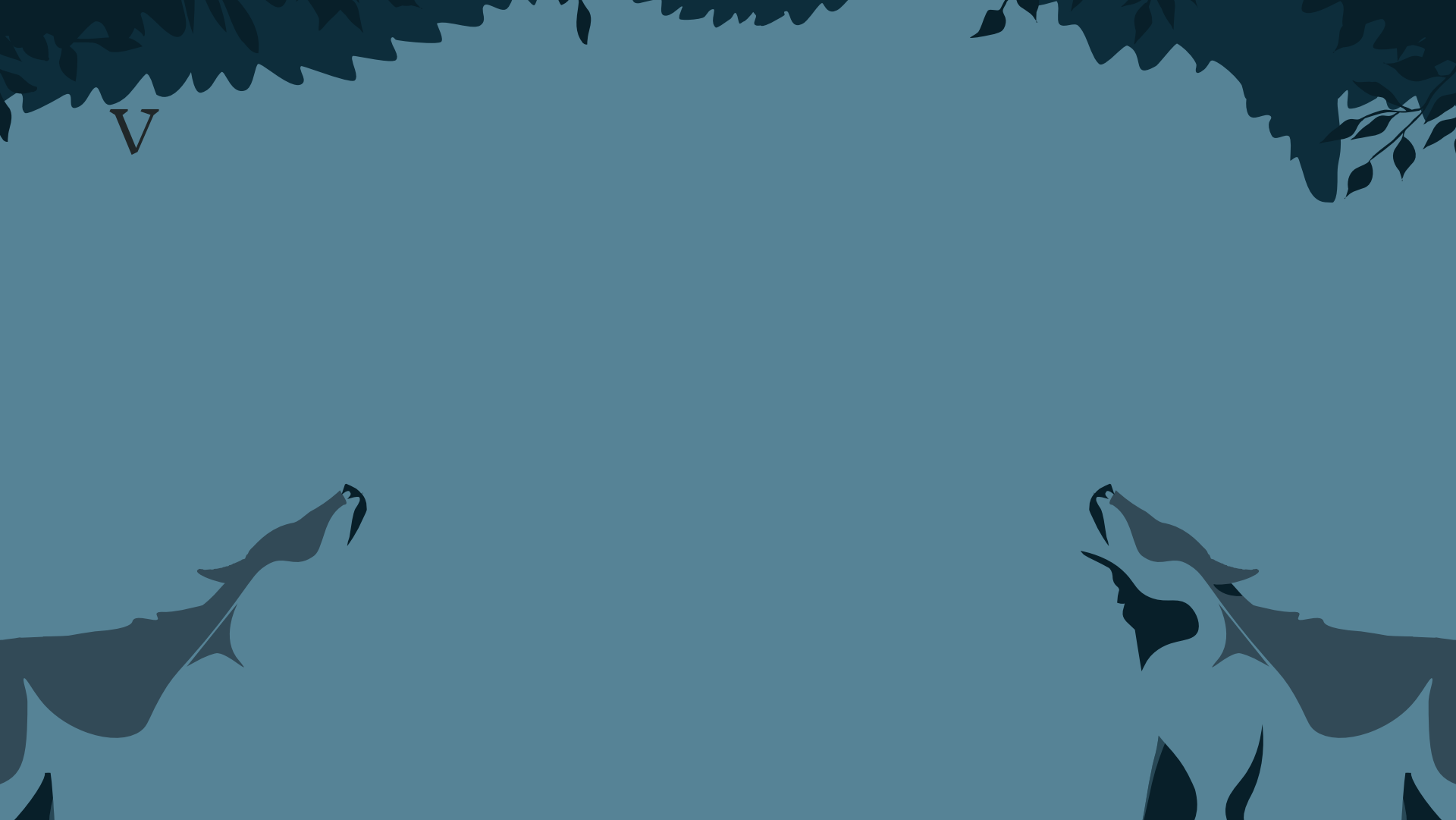
### Evidence of Intercultural Engagement

Examples of evidence from at least one (1) service, event, or activity via a one-page reflection: (Items not listed require pre-approval from the World Language Curriculum Specialist)	
Scholarship awarded based on English and 2nd language skills	Host a student from a target language country in your home
Work for a business that requires use of English and 2nd language	Plan an event to benefit or celebrate the target language community
Frequent 2nd language use when traveling to a target language country	Work as an assistant in Elementary World Language Program
Tutor an ESL student for a semester	Active membership in a world language honor's society
Volunteer at or plan a multicultural community event that requires the use of English and the 2nd language	Provide a service using English and the 2nd language in your school or community

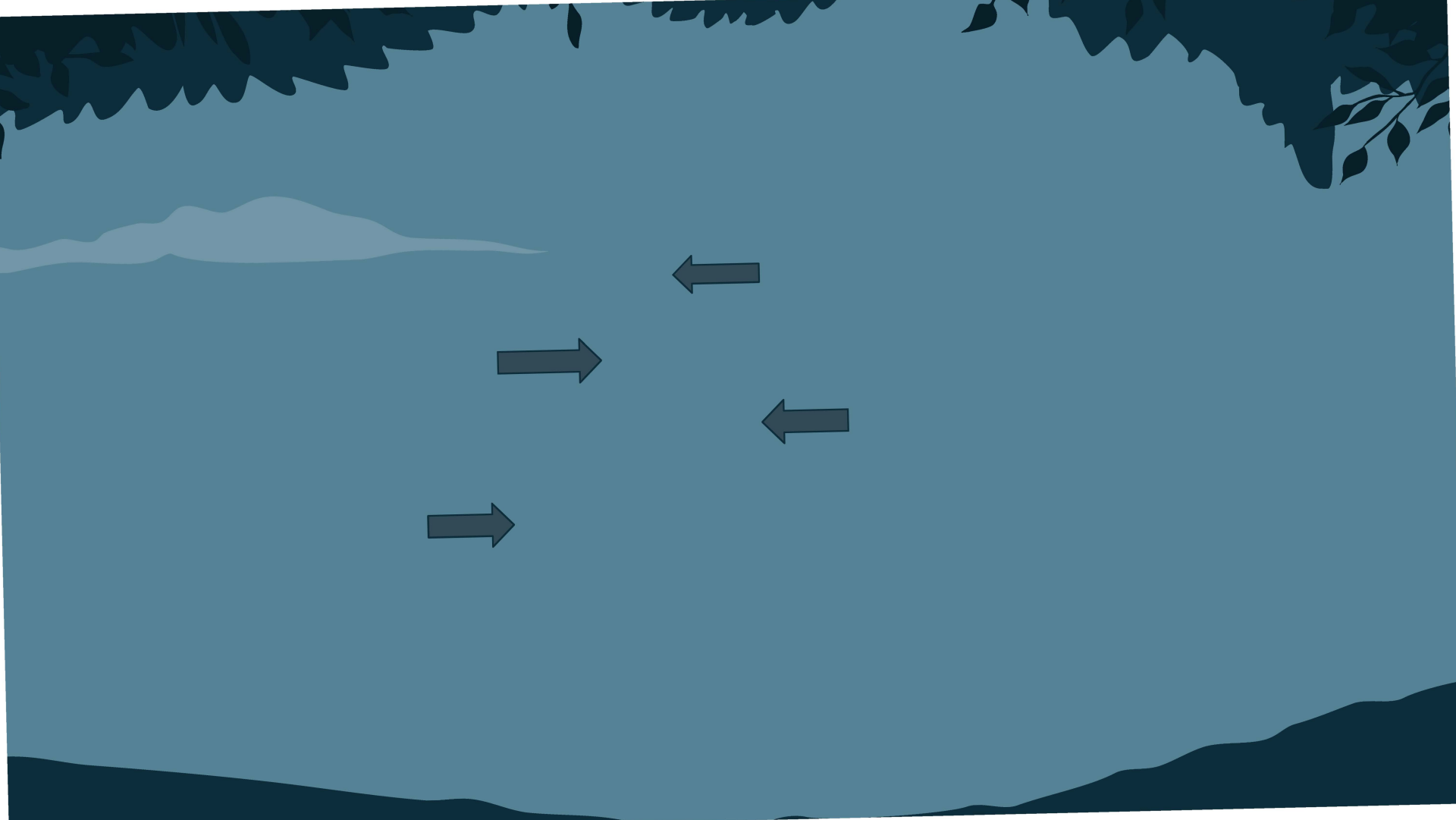


















Requesting T





















